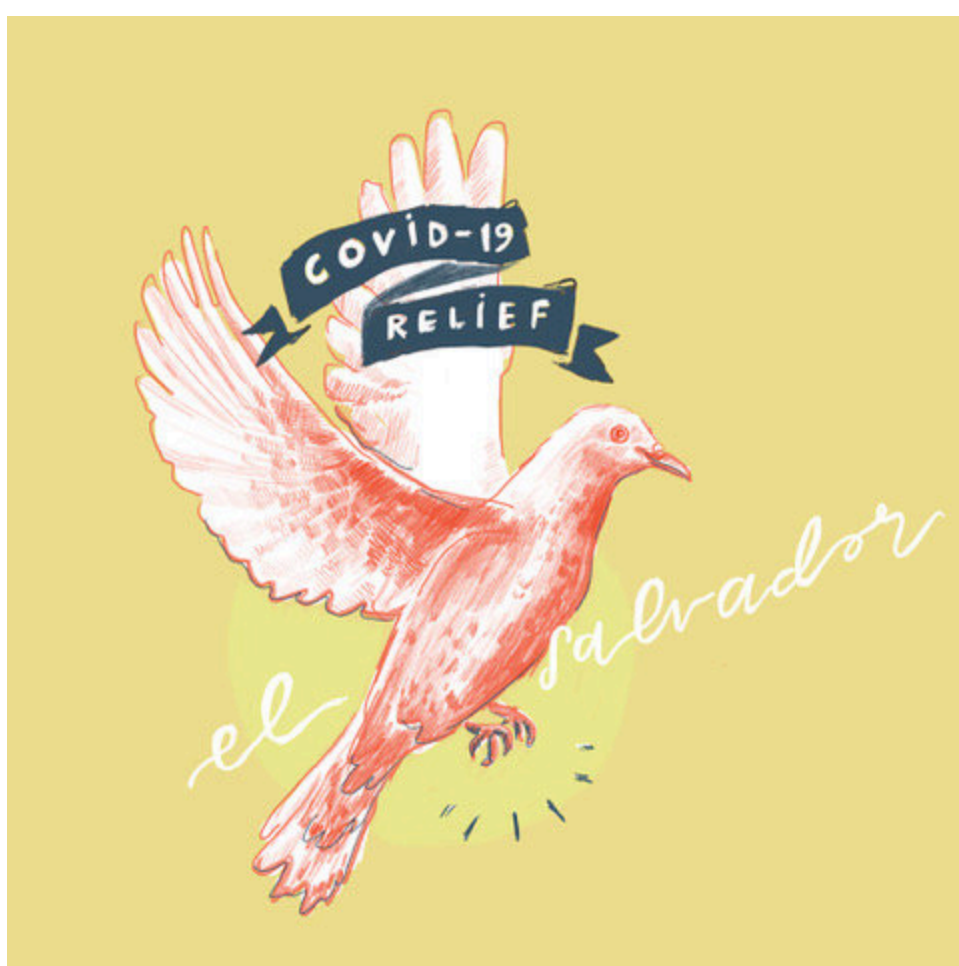


# 300 Salvadoran Families in Need of Food Right Now

Dear Friends of MASCP,

Below is a message from our National Network of U.S.-El Salvador Sister Cities (USESSC) who is raising funds for families in rural El Salvador negatively impacted by COVID-19. If you are in a position to donate, please consider supporting these families.

Thank you!



*Illustration by Rachel Dunlap*

Dear Friends of Sister Cities,

We hope you are doing everything you can to stay safe in body and mind during these tumultuous times. Although we are all changing our lives due to the current coronavirus pandemic, we must also remember that there are people facing this situation from a more challenging position, including many of our sisters and brothers in our sister communities in El Salvador.

Our sistering partner in El Salvador, CRIPDES, has already identified group of families in the CRIPDES network of communities that are not receiving any governmental assistance and that face the specter of going hungry as they are prohibited from working during the nationwide COVID-19 quarantine. We have responded immediately to CRIPDES' request and facilitated funds to feed dozens of families. And we need your help today! You can contribute via check to our address or by clicking onto our **“donate” button**.

We are launching an emergency \$12,000 fundraising campaign to help our sister communities meet their immediate need for food and to strengthen their organizing efforts that have always been at the core of their remarkable capacity to fight for health, education, sustainable agriculture and human rights. **Our priority in this campaign will be to meet CRIPDES latest request to support another 300 families in 18 communities in need of food immediately.**

This is where you come in. For a \$130 contribution you can provide an emergency food basket for five families to sustain themselves while they are in quarantine and, for those of us with less resources, just \$26 dollars can provide a food basket for a family of four. Of course, for those of you who can do more, we encourage you to do so! For example, some of us recently received a \$1200 stimulus check from the U.S. government, and are looking to use this money to help others. Please consider donating a portion or all (if you can!) of your check to this emergency fundraising campaign. These funds will make a difference. Help us do this and let others know about this initiative as well!

Thanks to the work of our El Salvador co-coordinators, Zulma and Mario, and our CRIPDES partner organizers in five regions, we have been able to act quickly. This amazing team also provides El Salvador updates that are not found anywhere else! You can follow the efforts of USESSC, CRIPDES and our sister communities to meet the current challenge checking our blog and social media **(FB) (Twitter) (Instagram)**

Your tax-deductible donation to US-El Salvador Sister Cities, no matter how small or big, will have an immediate impact in our sister communities and will help our solidarity network North and South organize in the days ahead for the rights of all to health and economic well-being. **Donate at [www.elsalvadorsolidarity.org](http://www.elsalvadorsolidarity.org) today!**

**DONATE NOW**

P.O. Box 132 Madison, WI 53701

Share on social



[www.mascp.org](http://www.mascp.org) 